

Programma

| Item | Presentator | Tijd |
|---|-----------------------|--------------|
| • Ontvangst & introductie | Jan Kleijweg | 17.00 |
| • Beveiligingsfilosofie | Rinus gaakeer | 17.15 |
| • Inbraak- en kogelwerende bouwkundige maatregelen | Jan Moberg | 17.30 |
| • Pauze / bezoek showroom | | 18.00 |
| • Integrale veiligheid & camerasystemen | Frank Kuiipers | 18.45 |
| • Explosieven detectiesystemen | Jan Kleijweg | 19.15 |
| • Afsluiting | Jan Kleijweg | 20.00 |

bavak

BEVEILIGINGSGROEP

bavak

BEVEILIGINGSGROEP

Historie

1975



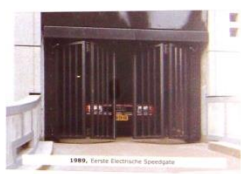
1980



1985



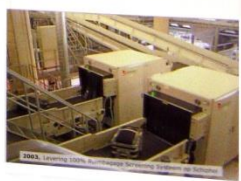
1990



1995



2000



2005



bavak

BEVEILIGINGSGROEP

bavak

BEVEILIGINGSGROEP

Beveiligingsfilosofie

bavak

BEVEILIGINGSGROEP

Presentatie door Rinus Gaakeer

Herkent U dit ook?

- **Alarmdetectie na de bouwkundige vertraging**

- **Directe schade**

- **Gevolgschade**



Vakantiefoto's
2011

Honderden jaren geleden beschermde de mens zich al
door een *schil* aan te brengen rond zijn / haar
grondgebied of huis



Chinese muur



Kasteel

Doel van beveiligen

- In een zo vroeg mogelijk stadium melding maken van een ongewenste activiteit met als doel het zo veel mogelijk waarborgen van de continuïteit van de onderneming en het beschermen van mensen, middelen en informatie.



Arbo-milieu risico's

Bestuurlijke risico's

Economische risico's

Criminele risico's



Risicoanalyse



Gebouw/technische risico's

Diverse methodes om risico's inzichtelijk te maken
CCV (BORG) externe criminaliteit

Kleuren methode alleen visualisatie van risico gebieden

Plannen/Inbreken/Verzamelen/ Tijden
Afvoeren/Alarmeren/Reageren
(P.I.V.A.AL.Re.)

Kans X Effect=Risico overzicht van belangrijkste risico's
en gevolgen

Kans x Effect = Risico

Tabel kanswaardering

| kans | omschrijving | punten |
|------------|-------------------------------------|--------|
| heel klein | praktisch onmogelijk | 1 |
| klein | denkbaar doch zeer onwaarschijnlijk | 2 |
| matig | ongewoon maar mogelijk | 3 |
| redelijk | voorstelbaar | 4 |
| groot | zeer goed voorstelbaar | 5 |

Tabel schade en effect waardering

| manuren personeel | reparatie kosten (in euro's) | publicitaire schade | operationele gereedheid | algemene beoordeling | punten |
|----------------------|------------------------------------|------------------------|----------------------------|-------------------------|--------|
| < 0 uur | geen | geen | geen invloed | zeer gering | 1 |
| < 2 en/of | < 500 | geen | geen invloed | gering | 2 |
| < 8 en/of | < 1000 | gering | halve dag | zeer kleinschalig | 3 |
| < 40 en/of | < 2.500 | enige | 1 dag | kleine omvang | 4 |
| < 200 en/of | < 5.000 | redelijk | 2 dagen | enige omvang | 5 |
| < 500 en/of | < 50.000 | aanzienlijk | 3 dagen | hinderlijk | 6 |
| < 2000 en/of | < 200.000 | groot | 1 week | zeer hinderlijk | 7 |
| < 3000 en/of | < 500.000 | groot | 2 weken | omvangrijk | 8 |
| < 4000 en/of | < 1.300.000 | zeer groot | 1 maand | zeer omvangrijk | 9 |
| < 4000 en/of | < 1.300.000 | zeer groot | volledig ontregeld | ramp | 10 |

Kans x Effect = Risico

| Risico en effect matrix | | | | | | | | | | |
|-------------------------|----|----|----|----|----|----|----|----|----|---|
| Effect \ Kans | 10 | 9 | 8 | 7 | 6 | 5 | 4 | 3 | 2 | 1 |
| 5 | 50 | 45 | 40 | 35 | 30 | 25 | 20 | 15 | 10 | 5 |
| 4 | 40 | 36 | 32 | 28 | 24 | 20 | 16 | 12 | 8 | 4 |
| 3 | 30 | 27 | 24 | 21 | 18 | 15 | 12 | 9 | 6 | 3 |
| 2 | 20 | 18 | 16 | 14 | 12 | 10 | 8 | 6 | 4 | 2 |
| 1 | 10 | 9 | 8 | 7 | 6 | 5 | 4 | 3 | 2 | 1 |

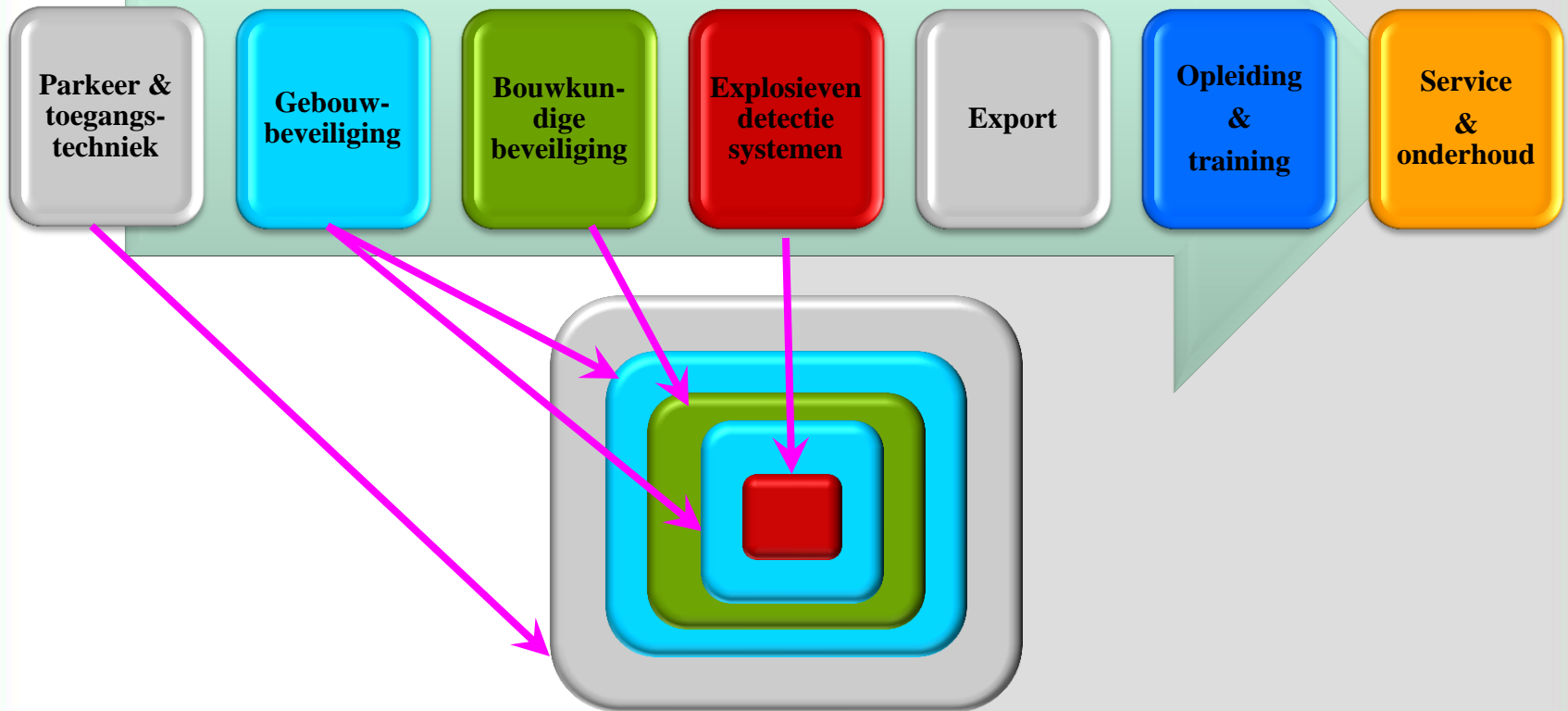
-  = Hoog beveiligingsniveau
-  = Middelhoog beveiligingsniveau
-  = Normaal beveiligingsniveau

Kans x Effect = Risico

TOP 10 RISICO

| Omschrijving | Kans | Effect | Risico | Bev. Niveau | Risicoplaats 1 | Risicoplaats 2 |
|--------------------------------------|------|--------|--------|-------------|----------------|----------------|
| Brand | 3 | 9 | 27 | HOOG | ketelhuis | Productie |
| Brandstichting | 3 | 8 | 24 | HOOG | gehele complex | |
| Kortsluiting / elektrische storingen | 3 | 6 | 18 | MIDDELHOOG | gehele complex | |
| Storing energielevering | 3 | 6 | 18 | MIDDELHOOG | gehele complex | |
| Inbraak | 4 | 4 | 16 | MIDDELHOOG | kantoor | productie |
| Explosie (gas / elektriciteit) | 2 | 8 | 16 | MIDDELHOOG | ketelhuis | productie |
| Uitval printers / netwerk / systemen | 3 | 5 | 15 | MIDDELHOOG | gehele complex | |
| Sabotage | 3 | 5 | 15 | MIDDELHOOG | gehele complex | |
| Waterlekkage | 3 | 5 | 15 | MIDDELHOOG | waterkelder | productie |
| Blikseminslag | 2 | 7 | 14 | MIDDELHOOG | gehele complex | |

Productlines



Parkeer- en toegangstechniek



- ✓ **Speedgates**
- ✓ **Road Blockers**
- ✓ **Bollards**
- ✓ **Slagbomen**
- ✓ **Tourniquettes**
- ✓ **Crash gate barrier**

Bouwkunde

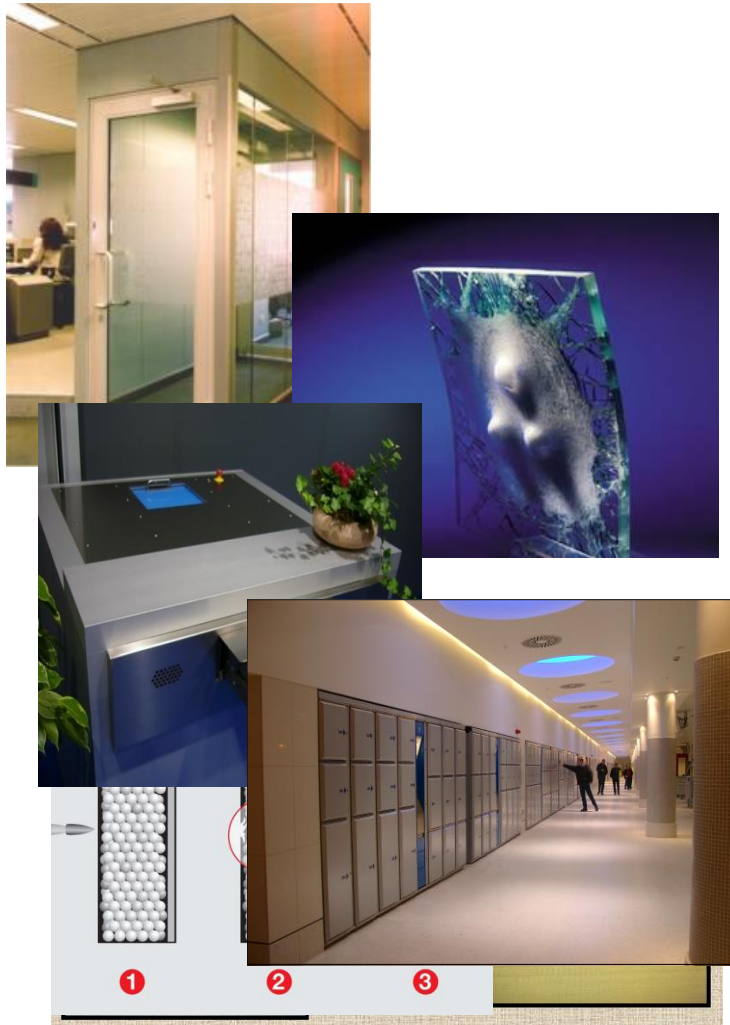
**Kogel- & inbraakwerende
Puien
Deuren**

Glas

**Inbraakwerend
Kogelwerend
Explosiewerend**

**Materialen tbv kogelwerende wand
Scanfiber
Protaurius**

**Doc. doorgeefsystemen
Speciale producten**



Gebouw beveiliging



Inbraakdetectie

Toegangcontrolesystemen

CCTV systemen

Intercomsystemen

Security man. systemen

EDS

- ✓ **Bagage inspectie systemen**
- ✓ **Metaaldetectie**
- ✓ **ZBV**
- ✓ **Restdeeldetectie**
- ✓ **Verhuur**



Training & opleiding



Open trainingen

Maatwerktrainingen



Filosofie



**Ballistische
Bouw Producten**

bavak

BEVEILIGINGSGROEP

Presentatie door Ir. J.W. Moberg

Producten

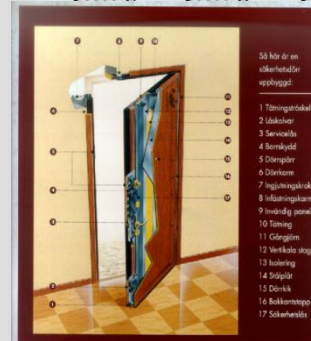
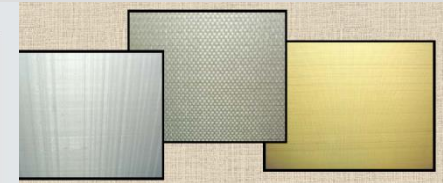
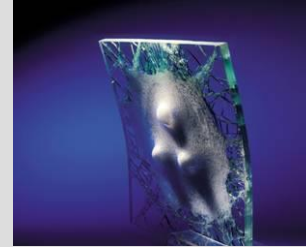
Glas:

- Normen glas
- Soorten beveiligingsglas

Kogelwerendheid wanden

Deuren

Doorgeefsysteem



1. Tööringstabel
2. Utkakel
3. Seiwelb
4. Bannhede
5. Döörpl
6. Döörkom
7. Injehringstok
8. Injehringkarn
9. Injehringkarn
10. Tööring
11. Gänge
12. Verkele steg
13. Isoring
14. Söör
15. Döör
16. Söörkapp
17. Söörkapp



Slagvastheid ENV 1627/EN356

| | | |
|------------|---|---------------------------------|
| Deurklasse | 1 | geen eisen gesteld (glasklasse) |
| | 2 | P4A |
| | 3 | P5A |
| | 4 | P6B |
| | 5 | P7B |
| | 6 | P8B |

Voorbeeld: 4 = 30 minuten testduur, onder 10 minuten intensief aanval met gereedschap* 10kN druk

* uitgekozen volgens de regels

Kogelwerendheid klassen

| EN 1063 | Wapen | Kaliber |
|-----------------|------------|----------------|
| - BR 1 | Geweer | .22 LR |
| - BR2 (C1) | Pistol | .9 mm Lüger |
| - BR3 (C2) | Revolver | .357 mm Magnum |
| - BR4 (C3) | Revolver | .44 mm Magnum |
| - BR5 | auto. K | |
| - Karabijn | 5.56 mm | |
| - BR6 (C4) idem | 7.62 mm | |
| - BR7 (C5) idem | 7.62 mm AP | |

**Kogelwerendheid
oppervlaktes, vervolg**

| Project snelheid m/s | Afstand m | EN1522 |
|----------------------|-----------|----------|
| - 360 | 10 | FB1 |
| - 400 | 5 | FB2 (M1) |
| - 430 | 5 | FB3 (M2) |
| - 440 | 5 | FB4 (M3) |
| - 950 | 10 | FB5 |
| - 830 | 10 | FB6 (M6) |
| - 820 | 10 | FB7 (M5) |

Beveiligingsklassen tegen drukgolf EPR

| EPR | Druk P (bar) | Impuls bar-ms |
|-----|--------------|---------------|
| - 1 | 0.5 | 3.7 |
| - 2 | 1 | 9.0 |
| - 3 | 1.5 | 15.0 |
| - 4 | 2 | 22.0 |

- 1 bar = 100 k Pa = 100kN/m² = 10.2 ton/m²

Veiligheidsglas*

Glas

- Groen gelamineerd glas (standaard)
- Hammerglass (polycarbonaat)
- Waterwhite/clear Silatec glas

Wij hebben het over:

- Veiligheidsglas
- Slagvast
- Kogelwerend
- Explosiewerend
- Opties: combinaties, etcetera

USP's

Standaard gelamineerd glas

- + Goedkoper dan de andere
- + In vele soorten en diktes
- Zwaar, qua gewicht
- Optisch gezien niet de beste

Hammerglass ® (PC)

- Een speciaal product opgebouwd uit PC en een harde 'oxide laag' aan weerskanten
- Optie; anti-scratch folie' aanbrengen
- Let wel; Hammerglass ® is bedoeld als 'safety' en slagvaste beglazing. Niet kogelwerend!
(wel in combinatie met gelamineerd glas)

USP's

- + Zeer goed materiaal voor 'safety' en slagvaste projecten, hoogste normen/classes
- + Goede helderheid
- + Makkelijk te installeren
- + Licht in gewicht ($\frac{1}{2}$ van standaard glas)
- Niet kogelwerend

Hammerglass

2011-02-23 04:46:39



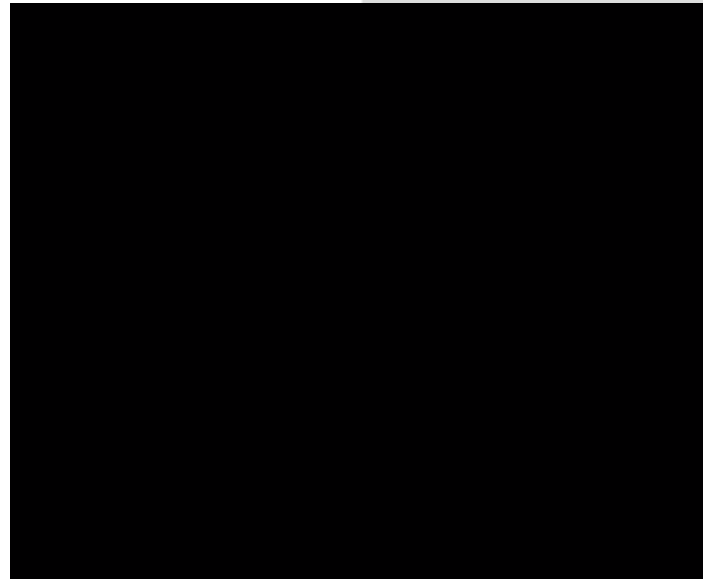
Silatec® glas

- Opbouw is ongeveer hetzelfde, maar ...
- Glas is helder, oxiden geëlimineerd
- Combinatie van glas met polycarbonaat
- Binding polyurethaan
- ‘Speciaal concept’ vloeibare bindingsmiddel
- Dit maakt het product hard, taai, dun en helder!

Silatec®

- + Glas helder, dus optisch perfect
- + Architectonisch zeer welkom
- + Hoge eisen zowel slagvast, kogelwerend als crash-rated!
- + Men ziet geen verschil met 'standaard glas'
to be and not to be seen, goed in beveiligingsprojecten
- Duur
- Beperkte markt; juweliers, musea, modewinkels, privéhuizen

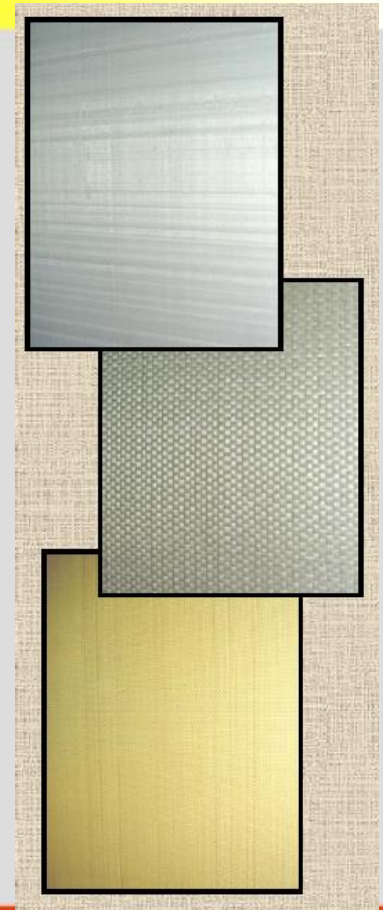
Silatec



Scanguard® materialen

3 soorten materialen:

- Fiberglas (E-glass) G332
- Aramide (Kevlar) A200
- Polyethyleen. PE (Dynema) P200



Glasfiber (kogelwerend materiaal)

- + Relatief goedkoop, vergelijkbaar met mangaan staal en goed tegen 'fragmenten/splinters'
- + Makkelijk te bewerken, zagen, boren etcetera
- + Gecertificeerd door NATO, onder andere STANAG
- Niet slagvast, mits in combinatie met ander materiaal (opties)

USP's

Aramide (Kevlar)

- + Lichter dan G322, 50 – 70% lichter dan staal
- + Vormbaar, vergelijk kogelwerende helmen en vesten
- + Gecertificeerd NATO
- Prijzig

USP's

Polyethyleen

- + Zeer licht materiaal
- + Gemakkelijk te bewerken
- + Gecertificeerd NATO
- Prijzig

- Kiezel kogels/pellets als opvulling tussen panelen en sponningen
 - Is een goede ballistisch concept en kent diverse eigen certificaten
 - Ergonomisch, logistiek en milieuvriendelijke methode
- + Gemakkelijk aan te vullen, door draagbare zakken
- Bouwkundig gezien, zwaar materiaal

Protaurius op een rij

Pellets/kogels van silicone, aluminium,
Fe (III)-Calcium en magnesiumoxide

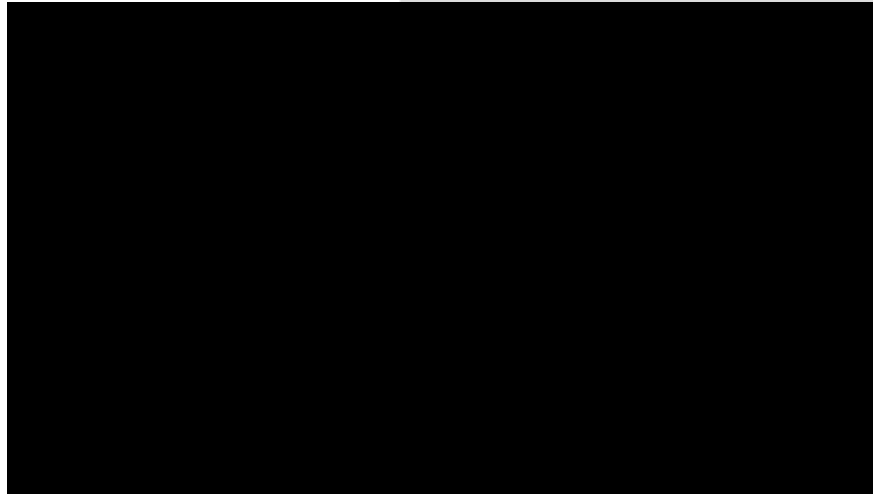
- Diameter 13mm
- Gewicht 1.44 kg/1

Getest in 3 categorieën/classes

- | | | |
|-----------------------------|----------------|-----|
| - 7.62 x 51 (lood kern) | Wanddikte 70mm | FB6 |
| - 7.62 x 51 AP (staal kern) | 100mm | FB6 |
| - 7.62 x AP (WC kern) | 125mm | FB7 |

(volgens STANAG 4569)

Protaurius



Veiligheidsdeuren

- Torterolo & Re
- Skydas

Inbraakvertragende deuren, ook in kogelwerende uitvoering leverbaar.

- Aanpasbaar aan architectuur van het pand



Wurster ® doorgeefsystemen

Er zijn 5 verschillende typen systemen:

- Vaste doorgeefsystemen
- Schuiflades
- Gevel uitvoeringen
- Geld en goederen/pallets doorgifte systemen
- Combinatie van bovengenoemd & wandmeubel



**Wurster ®
7000 serie**

- Voorzien van model 53
- Kogelwerende pui en wand
- Brandwerend

Bij het adviseren van een van de modellen, bedenk voor welk doeleinde en normstellingen de bak gebruikt gaat worden. (restricties/valkuilen)



Paauze



Lenel Business Profile

Bavak Beveiligingsgroep Noordwijk,

13 November 2015

Sales Presentation

Frank Kuijpers

Director Central Europe

Lenel Fast Facts

- Subsidiary of UTC F&S, the largest Fire & Security Company in the World
- Rochester, NY, USA HQ - established in 1991 (420+ emp., 4.800+ incl. GE Security)
- Software company that specializes in *Integrated Security Management Solutions*
- Support centers, in the US, Europe, Middle East and Asia
- 18,000+ customers, 100+ countries, 400+ Global VAR's



#1 World Market Share Leader in Integrated Electronic Access Control

IMS Research (September 2010)

Lenel Global HQ



Lenel Europe



Lenel Middle East



Lenel AsiaPac





\$58.7B* (US) sales

230.000+ employees worldwide

Operates in 180 countries

4.000+ locations in 62 countries



Carrier:
Heating, air conditioning systems



Otis:
Elevators, escalators



UTC Fire & Security:
Fire, Safety & Security solutions



Pratt & Whitney:
Aircraft engines



Sikorsky:
Helicopters



UTC Power:
Power systems, fuel cells



Hamilton Sundstrand:
Aerospace, industrial systems

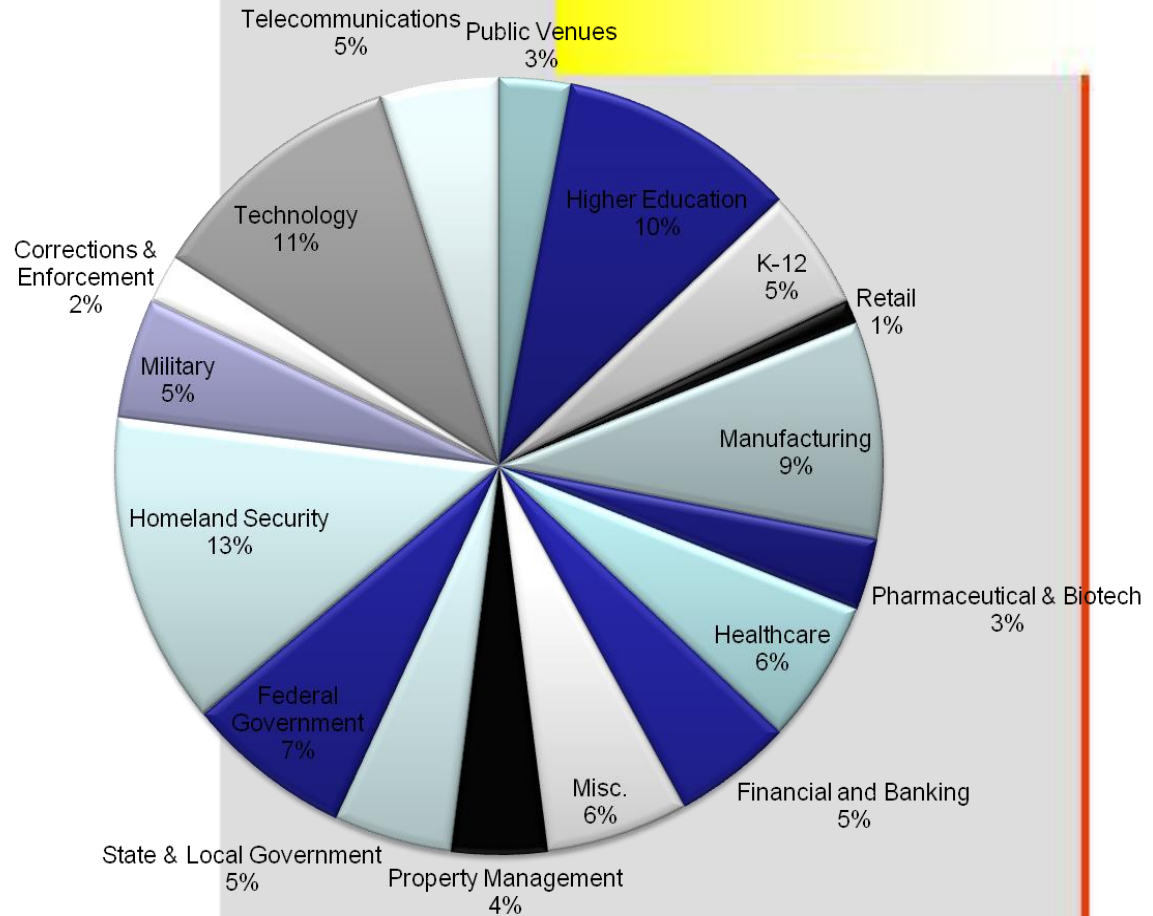
Market Presence

- Key Markets Served

- Commercial
- Multi-Tenant
- Government
- Transportation

- Product Applications

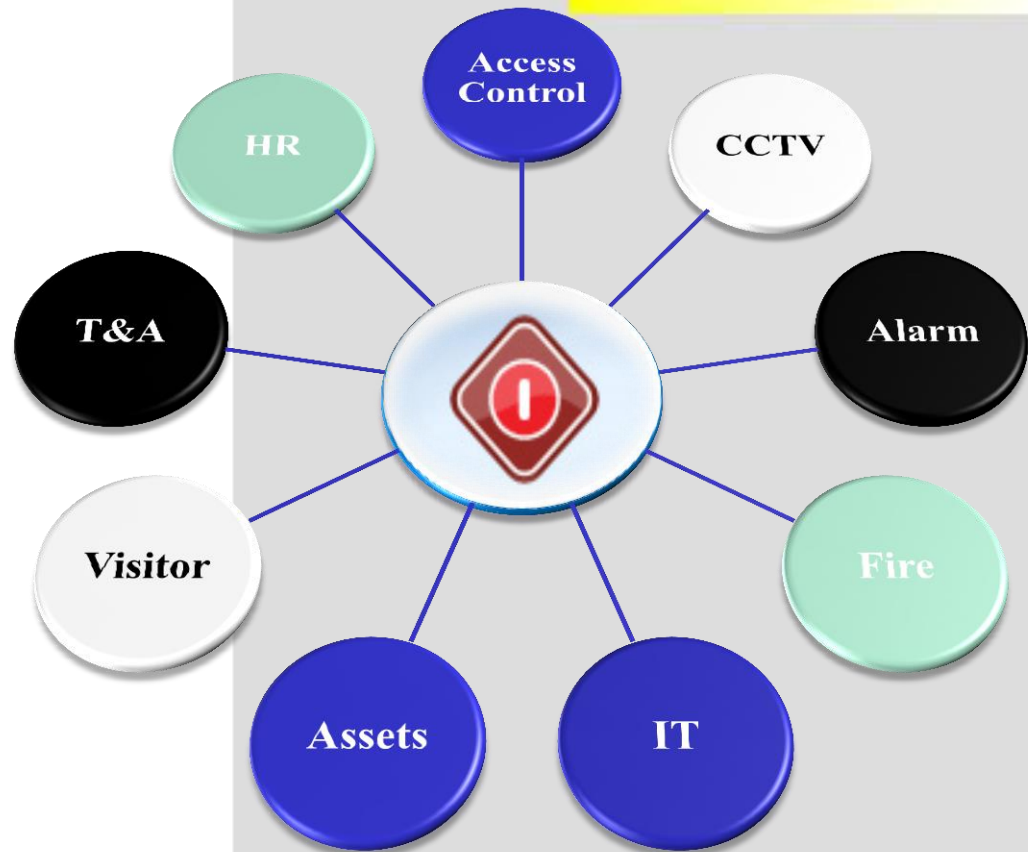
- Enterprise Security
- Security Monitoring
- Video Management
- Access Control & ID
- Systems of **any size and scope**
1 reader and 1 camera
to 10's of thousands
- 3rd Party Interfacing





OnGuard Platform

- Brings Security Information Together
 - **Single user interface** for monitoring, event linkage, reporting, administration, and configuration programming
 - **Enhanced productivity and decreased costs**



Portfolio Overview

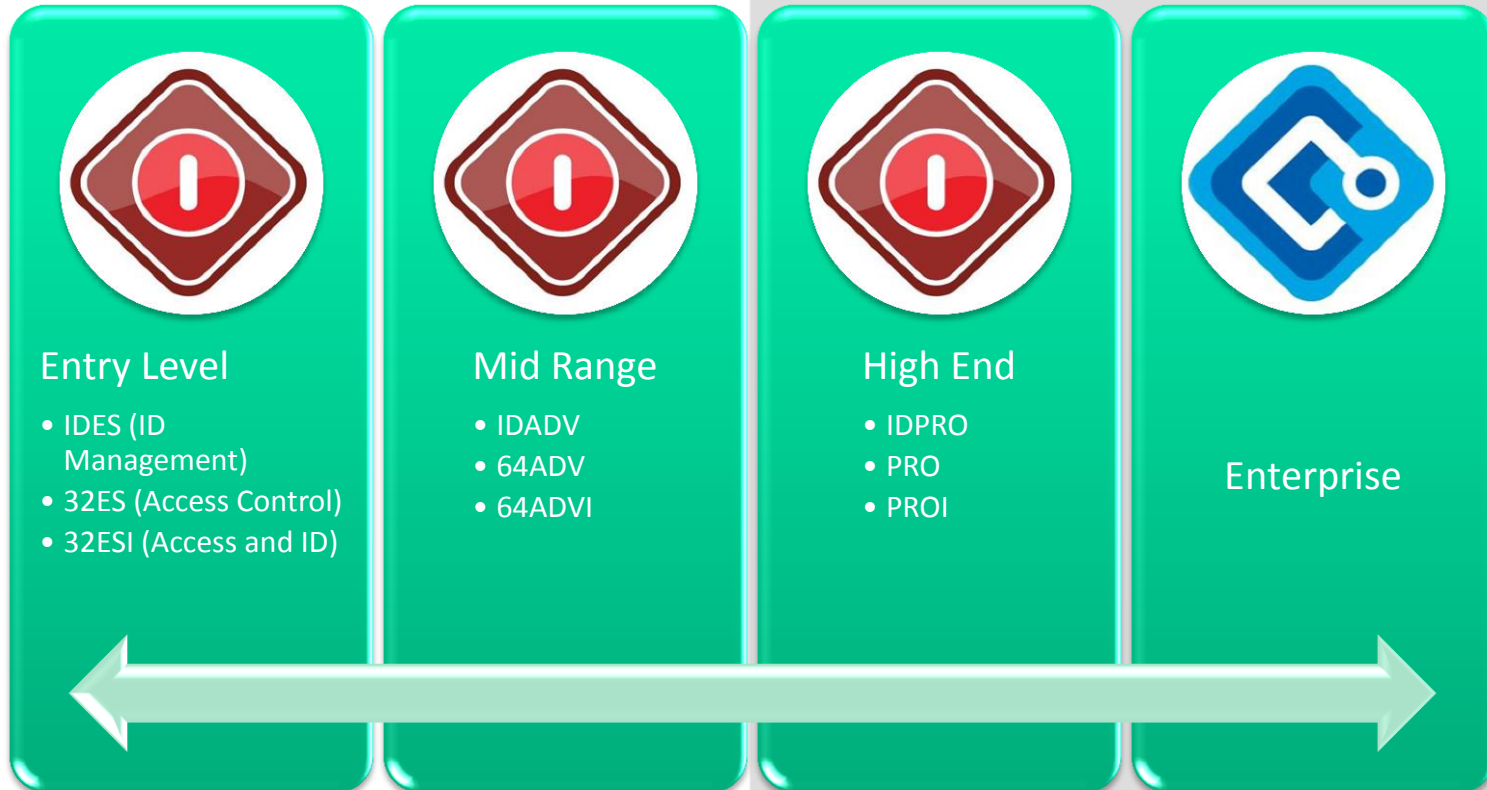
OnGuard

Access &
ID Mgmt.

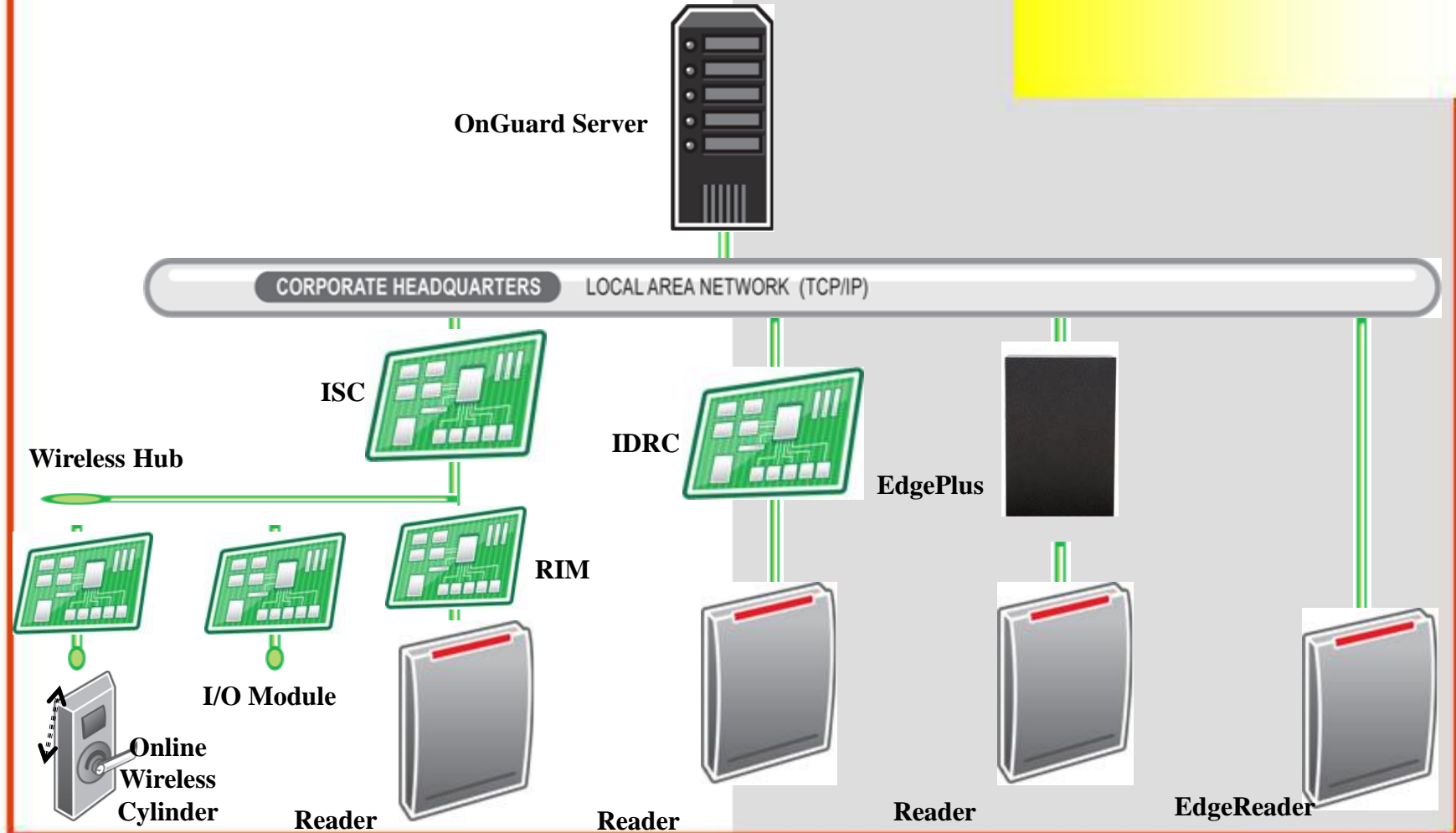
Digital
Video

Integration

Market Segmentation *for Access and ID Management*

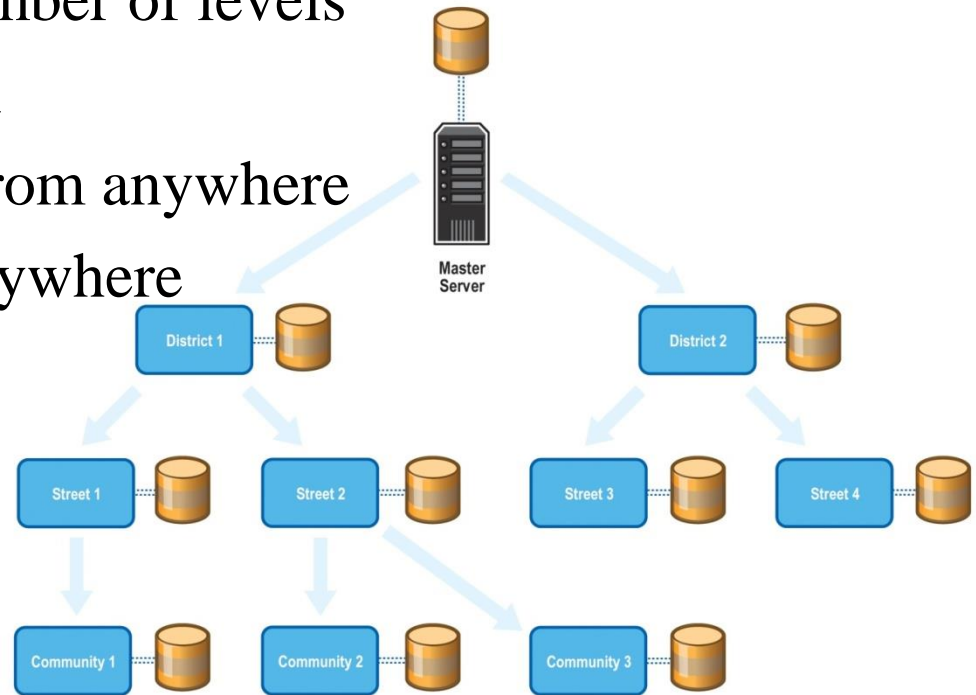


OnGuard Field Hardware Topology



Enterprise

- Multi-Site Data Synchronization Architecture
- Multi-Level Architecture
 - No restriction on number of levels
 - Unlimited expansion
 - Monitor Hardware from anywhere
 - View Video from anywhere
- Sizes
 - SM
 - Lite
 - Standard



Market Segmentation *for Digital Video*



Entry Level

- goVision



Mid - High End

- OnGuard Digital Video



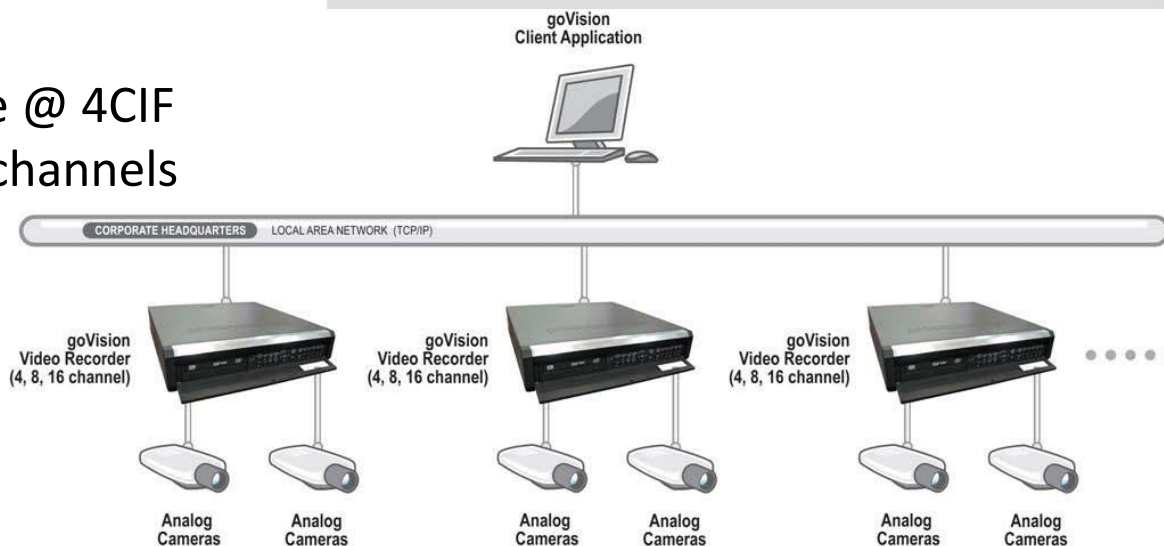
Video Centric

- SkyPoint



Entry Level (goVision)

- Video
 - Analog (*ver. 1.x*)
 - Semi-Hybrid (*ver. 2.x*)
- Embedded System
- 4, 8 or 16 Channels Video and Audio
- H.264 Encoding
- Real-time frame rate @ 4CIF resolution on all 16 channels
- Single Site or Multi Site
- Input/Output
- DVD Writer
- Embedded Analytics



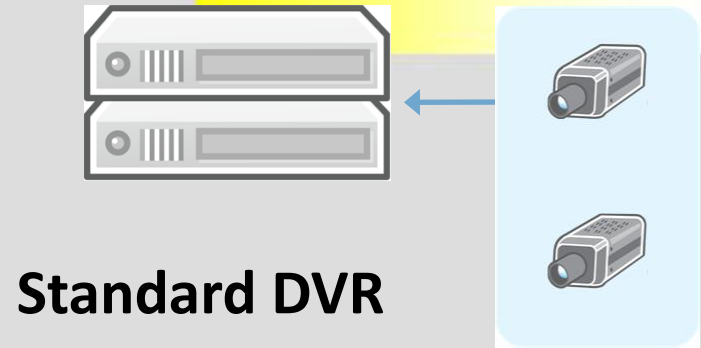
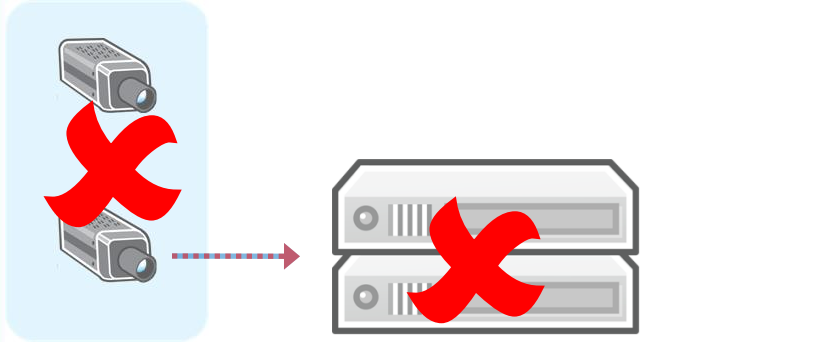
Mid Range

- LNVR
 - Software suite on a Windows machine
 - Channel license fee
 - True Failover and Redundancy functionality
 - Audio
 - In-Camera Storage
 - Chassis
 - ES Tower Model, up to 2 Storage HDD
 - ST 4U Rack mount, up to 3 Storage HDD
 - EX 3U Rack mount, up to 8 Storage HDD, RAID Controller
1U Rack mount, up to 3 Storage HDD, RAID Controller

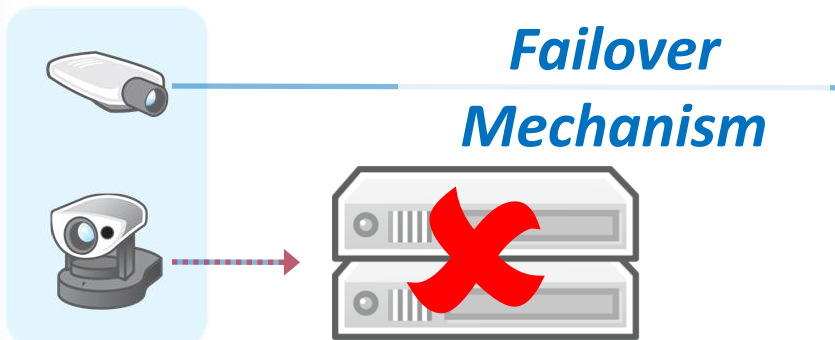
Mid Range

- Hybrid
 - 4/4, 8/8 or 16/16 Channels
 - Analog MPEG4, up to 25fps
 - IP MJPEG, MPEG4, H.264, up to 25fps

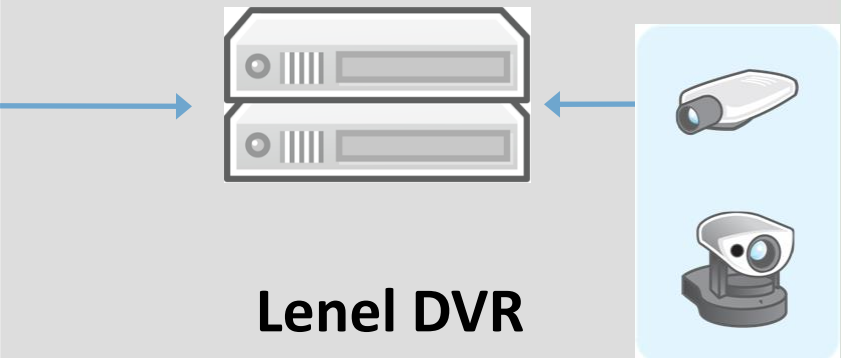
Failover Example DVR vs. LNVR



Standard DVR



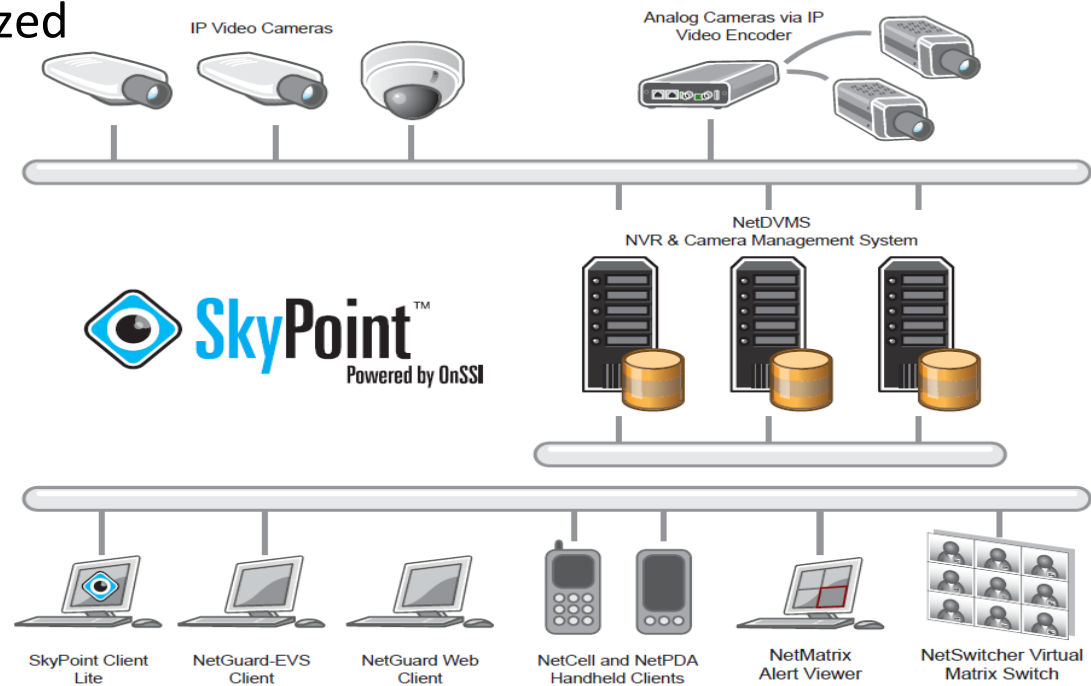
*Failover
Mechanism*



Level DVR

Video Centric Solution : SkyPoint

- Multi-site/multi-server intelligent IP Surveillance software suite
- Touch Screen Optimized
- Unlimited
 - # Cameras
 - # Clients



Web Based Video

The screenshot displays a web browser window titled "VideoViewer - Windows Internet Explorer". The address bar shows the URL: http://localhost/Inl.Baslica.Web-5.12.100/Inl_OG_VideoViewer.aspx. The browser's menu bar includes "DevToolBar", "View DOM", "Disable", "View", "Outline", "Validate", "Images", "Resize", "Misc", and "Show Ruler".

The main content area features a red header with the "OnGuard® VideoViewer" logo. To the right of the logo, it displays the user's "Username: SK", "Workstation: 127.0.0.1", and "Local Time: Friday, January 12, 2007 11:04:47 AM". There are also "Help" and "2x2 Static Template" options.

On the left side, a "Devices" tree view lists the following cameras under the "SKLNVR" root:

- Axis 211 SK's Cub
- Axis 214 PTZ Lab
- Sony RZ25 SK's Cub
- Sony Z20 SK's Cub

The main area contains four video feeds in a 2x2 grid:

- Top-left: "Axis 211 SK's Cub (SKLNVR)" showing two people in a hallway.
- Top-right: An office desk with a computer monitor and a whiteboard.
- Bottom-left: "Sony RZ25 SK's Cub (SKLNVR)" showing a cubicle area.
- Bottom-right: "Sony Z20 SK's Cub (SKLNVR)" showing two people in a hallway.

At the bottom left, there is a "Recorded" settings panel with a timeline and playback controls. The timeline shows a recording period from 10:50:00 AM to 11:00:00 AM on 01/12/2007. The current playback position is 10:55:56 AM. Playback controls include play, stop, and seek buttons.

The status bar at the bottom of the browser window shows "Local intranet" and a zoom level of "100%".

Lenel Intelligent Video Environment (LIVE)

Analytical functions/descriptions

- **Direction of Motion** Motion at specific direction or along specific axis
- **Speeding** Object moves faster than a predefined speed
- **Stopping** Object stops anywhere in camera's view
- **Starting to Move** Marked object starts to move
- **Standing Vehicle** Vehicle stopped for more than a predefined duration of time
- **Path of Motion** Object moves along a specific unauthorized path
- **Human Detection** Detecting humans
- **Object Differentiation** Differentiates between types of objects
- **Object Detection** Detect object in the background of constantly-changing region
- **Video Stabilizer** Stabilizes shaky video
- **PTZ Auto-Tracking*** Analytic control of PTZ camera for automatic tracking
- **People Counting** Count people going in and out a (limited-sized) entry/exit point
- **Crossing a Region** Object crosses a virtual line
- **Facial Detection** Detection of human faces at entry/exit point
- **Loitering or Lurking** Detection of a human loitering in an open area

Lenel Intelligent Video Environment (LIVE)

Analytical functions/descriptions

- **Crowding** Crowd of people at specific region
- **Line of People** Line of people exceeds a predefined length
- **Group of People** Group of people in field of view
- **Level of Focus** Measures “out-of-focus” level to generate an alarm
- **Camera Covered or Moved** Alarm when someone covers or moves the camera
- **Object Left behind** Detects object that was left in camera’s view
- **Object Removed** Detects object that was removed
- **Smoke Detection** Detects thick smoke
- **Multi-camera stitching** Creates a single view from up to 4 overlapping cameras
- **Perspective Correction** Corrects object size according to camera perspective
- **Geo-Spatial Detection** Links analytic event in camera’s view to a map location
- **3D People Counting** Uses stereo vision to do very accurate people counting
- **Object Detection by Color** Detects object in a specific color
- **Mantrap** Detects that more than one person is in a mantrap
- **PTZ Out of Home Position** Automatic detection of PTZ camera out of its home position

Offline 3rd Party Integration

- **DataExchange**
 - **Import and Export**
 - **Database or various Text file formats**
 - **Manual or Scheduled**
 - **Easy to use**
 - **End-User configurable through GUI**
 - **End-User operated through GUI**
 - **End-User feedback through Alarm Monitoring**
 - **Powerful**
 - **Conditional Export/Import**
 - **SQL Pre and Post Execution Actions**
 - **Calculations, String Manipulations,**
 - **Multi-Lookup and Combine**

Online 3rd Party Integration

- **DataConduIT**
 - **Advanced Scripting Application Integration Service (Jscript, VBScript)**
 - **Integration with IT-based applications**
- **OPC**
- **SNMP (Simple Network Management Protocol)**
 - **Monitoring SNMP Compliant Devices on a Network**
 - **OnGuard hardware and software events can be reported as SNMP traps to third party applications**

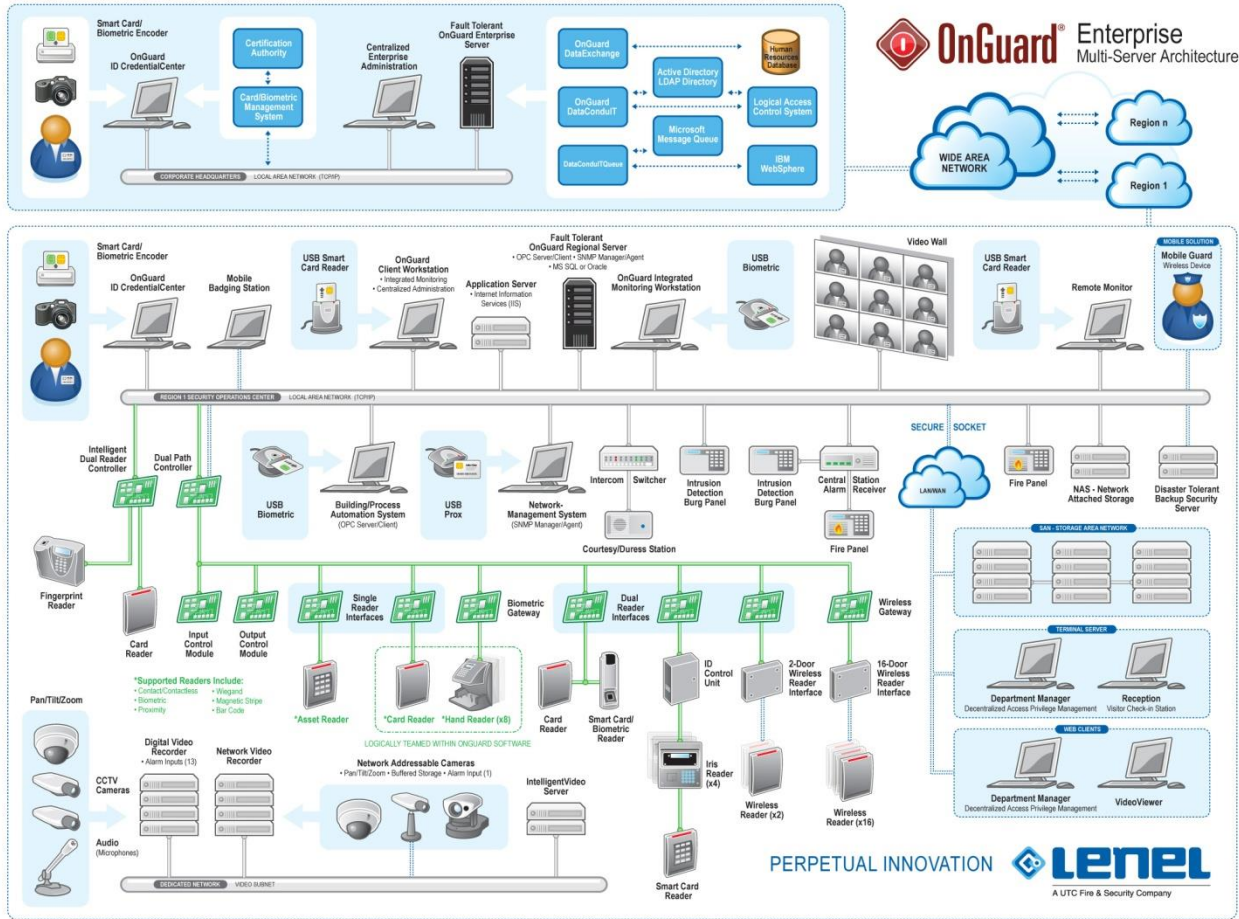
OAAP 3rd Party Integration

- **OpenAccess Alliance Program**
 - **Open to any Manufacturer**
 - **Based on Fully Documented OnGuard API family**
 - **OpenDevice (*Access Control related Device Interface*)**
 - **Access Control** **Access Control panels**
 - **Fire** **Fire panels**
 - **Intercom** **Intercom systems**
 - **Intrusion** **Fences and burglary systems**
 - **Elevator** **Elevators systems**
 - **Point of Sale** **Point of sales devices**
 - **Personal Safety** **Life safety systems**
 - **Receiver** **Central station alarm receiver**
 - **OpenVideo (*Video related Integration*)**
 - **Capture:** Integration of 3rd Party cameras and video servers
 - **Recorder:** Live and recorded video streams from 3rd Party DVR's
 - **Retrieval:** integration of a third party recorder with the IntelligentVideo Algorithms

Partnership Integration

- **Fully Integrated**
 - **NEC (ExpressCluster and FT)**
 - **HID (OSDP Reader/Display/Keypad, Smartcard integration)**
 - **Axis**
 - **Microsoft (Active Directory)**
 - **Oracle**

Enterprise Graphic



EDS

bavak

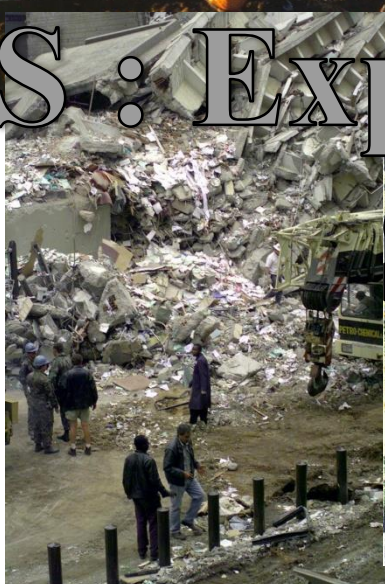
BEVEILIGINGSGROEP

Presentatie door jan Kleijweg

EDS



EDS : Explosives Detection Systems



EDS

Wat is EDS ?

- Detectie van contrabande, (narcotica) wapens en explosieven bij personen, voertuigen, bagage, goederen en vracht
- Detectie gebeurt meestal visueel en leidt niet altijd tot een identificatie

EDS



EDS

Waar wordt EDS screening toegepast?

- Luchthavens: personen, bagage en vracht
- Zeehavens: (personen/bagage) containers
- (Buiten) grenzen: personen en vracht
- Penitentiaire inrichtingen/justitie: personen
- Hoog risico objecten: personen

EDS

Technologie op luchthavens is leading voor industrie maar kent specifieke problemen

- LAG detectie en doorstroom snelheid bij screening proces
- Beperking voor toe te passen techniek bij personen screening: Backscatter/Millimeter golf techniek
- Efficiënte luchtvracht screening

CT Technologie

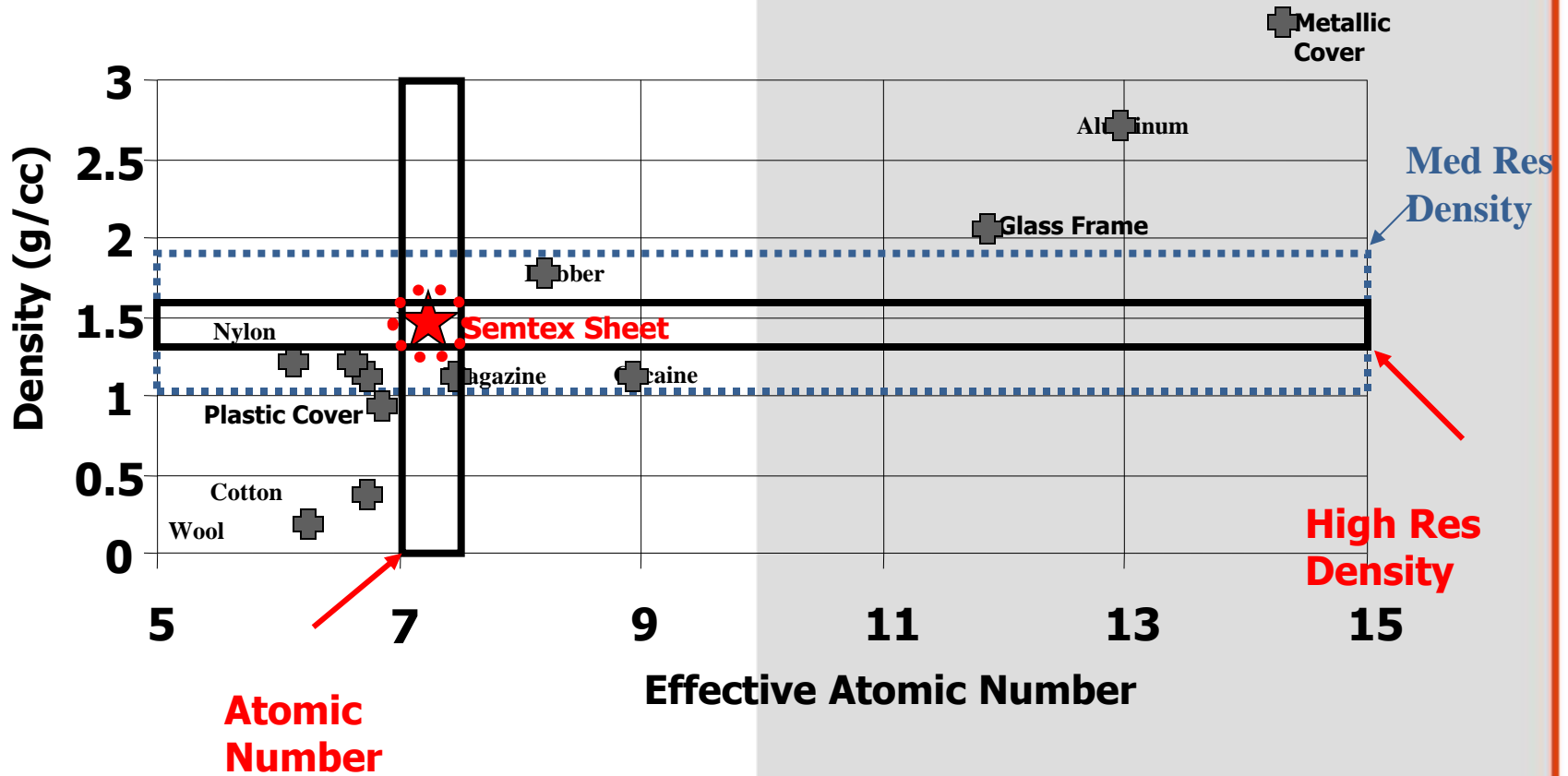


Bagage screening



Baggage screening

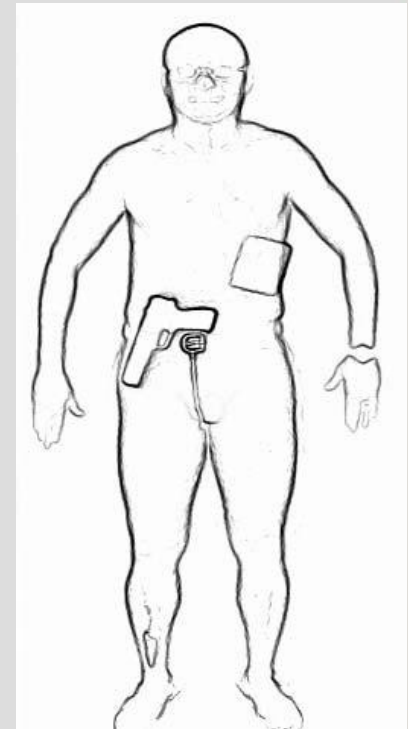
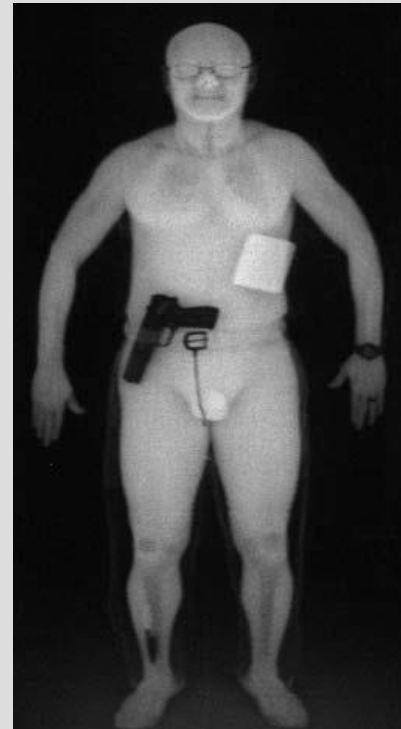
Typical sheet explosives false alarms



Backscatter techniek



Personen screening



Millimetergolfttechniek

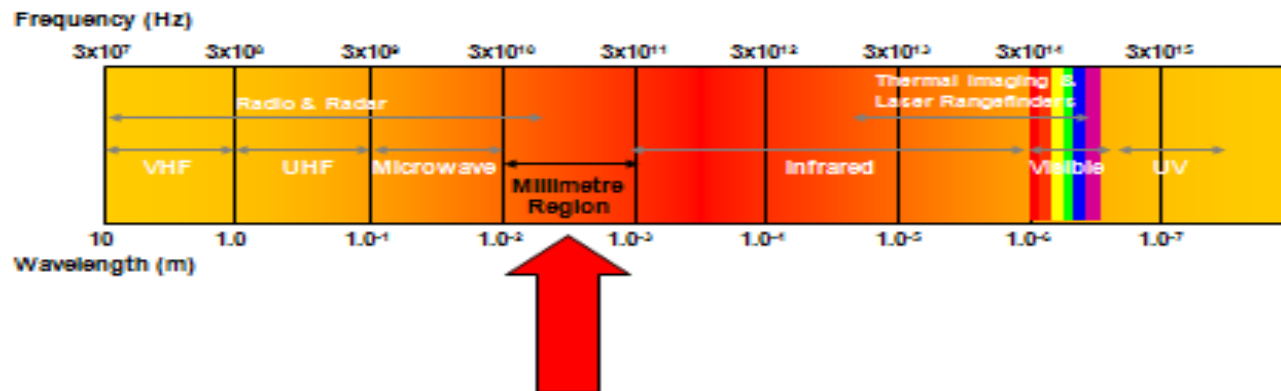


Personen screening



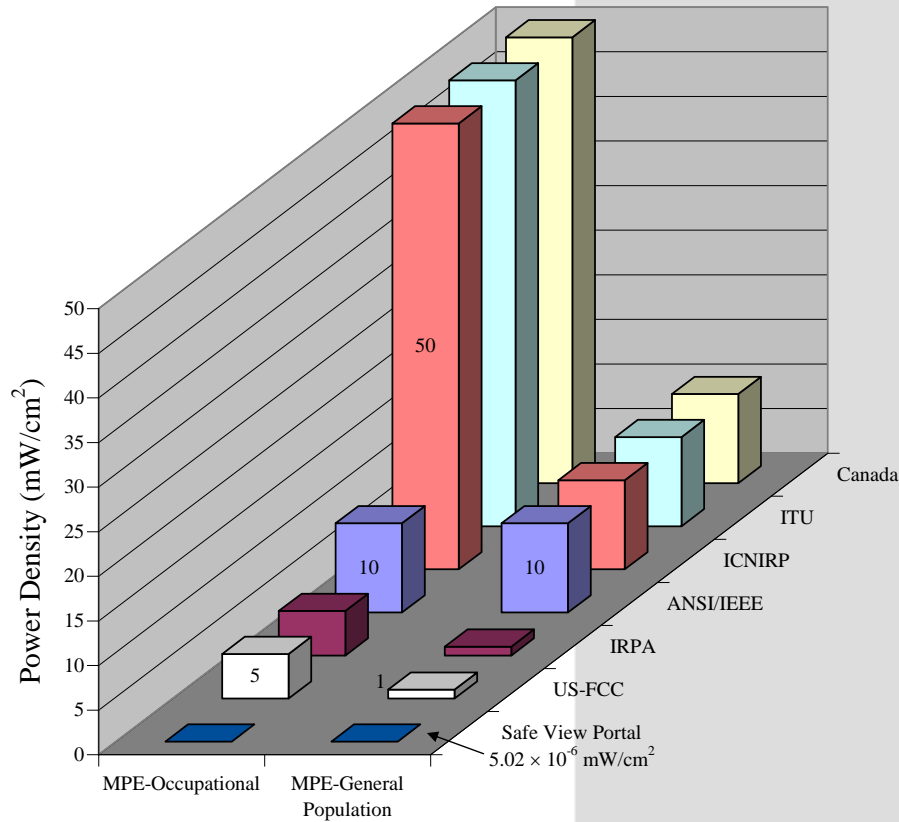
Personen screening

Passieve millimeter techniek



RF stralingseffecten MMW techniek

Personen screening



Vracht-en container screening

Lineaire versnellers

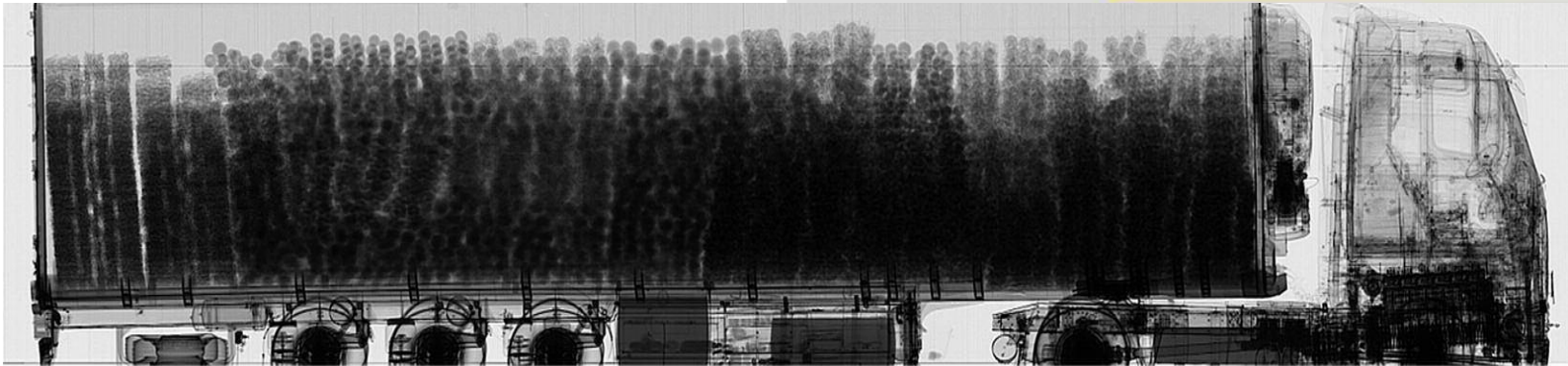


Backscatterertechniek



Vracht-en container screening

Lineaire versneller



Backscatterertechniek



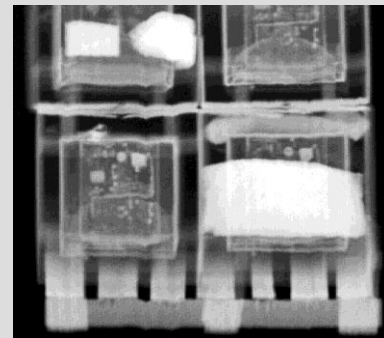
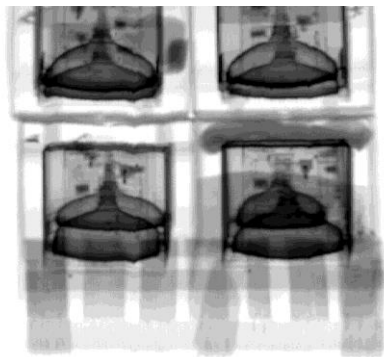
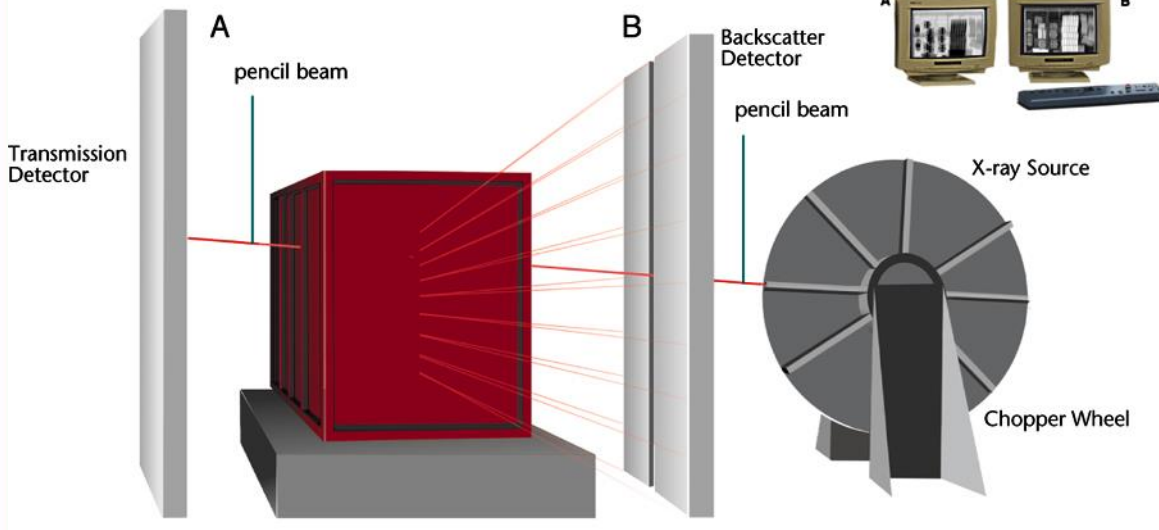
ZBV Backscattervan

Vracht-en container screening

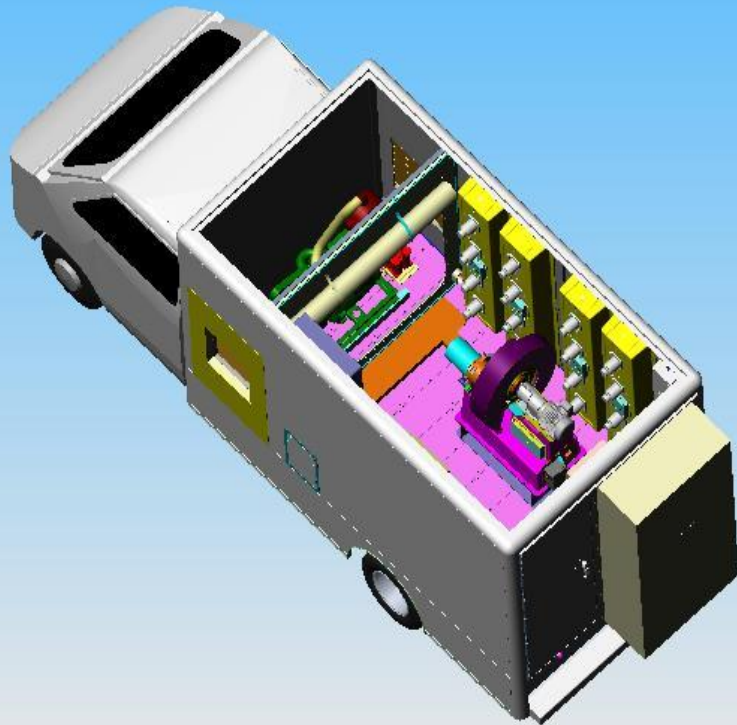


- Detectie en stralingsbron aan één zijde
- Kan onopvallend gebruikt worden in de meest uiteenlopende omstandigheden

Backscatter



Backscatter



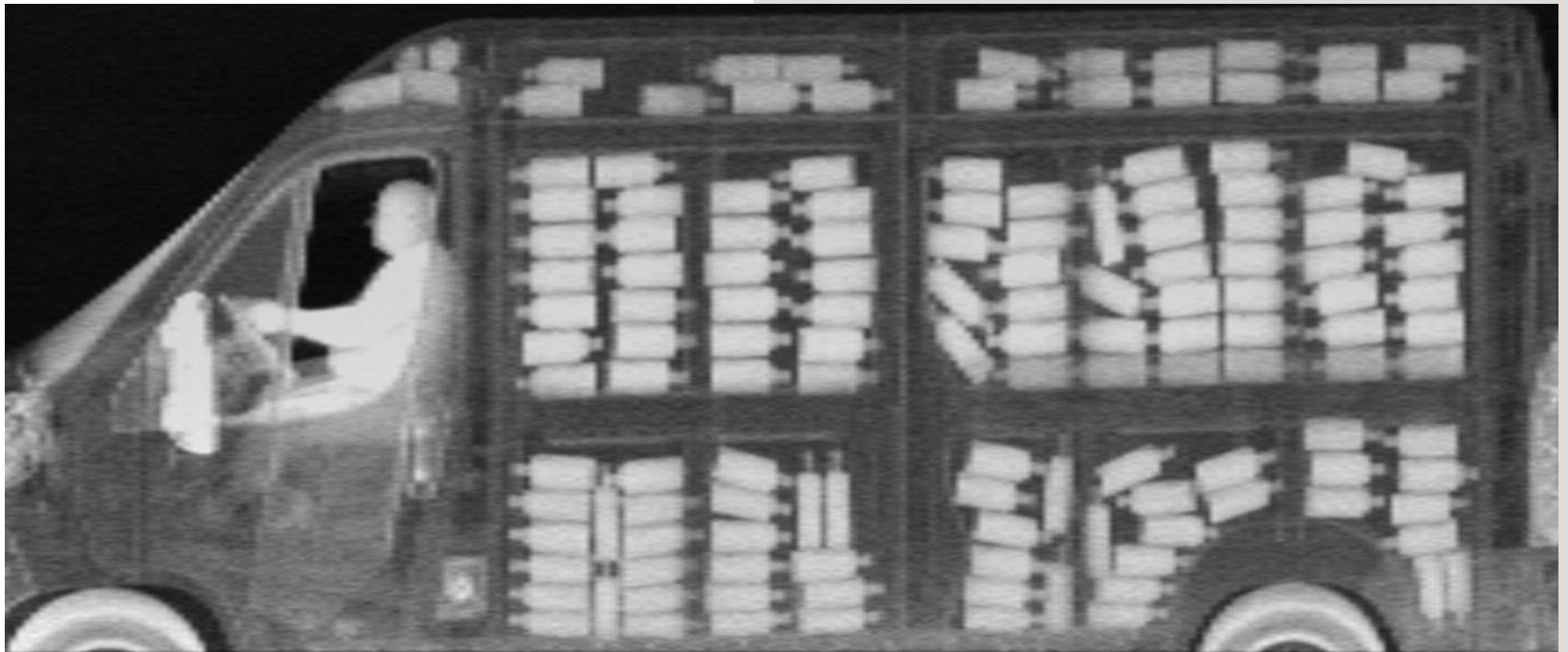
Backscatter



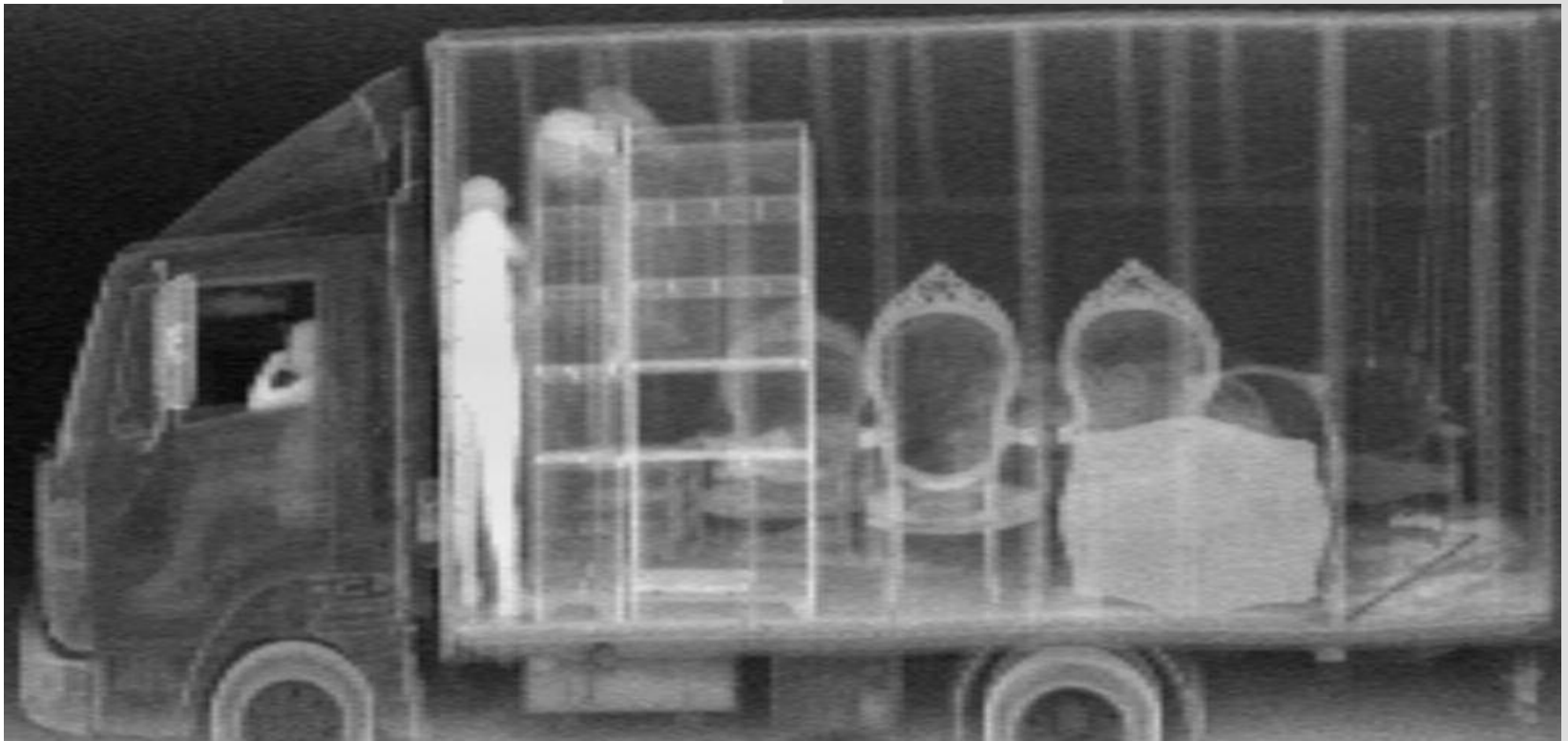
Backscatter



Backscatter



Backscatter

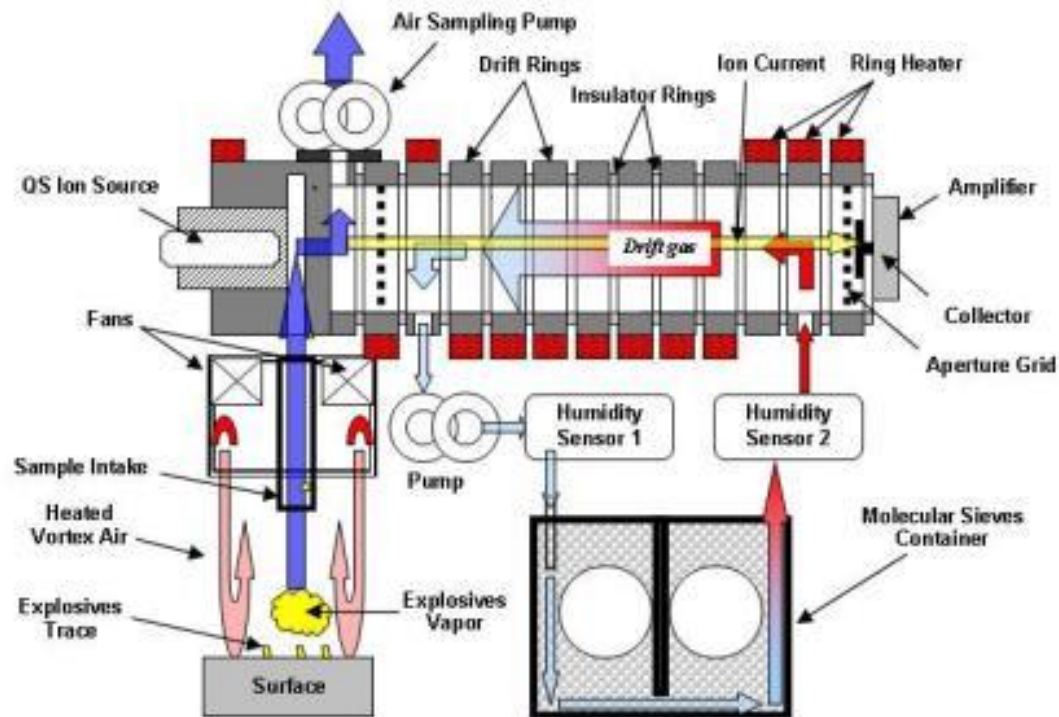


IMS Detectie

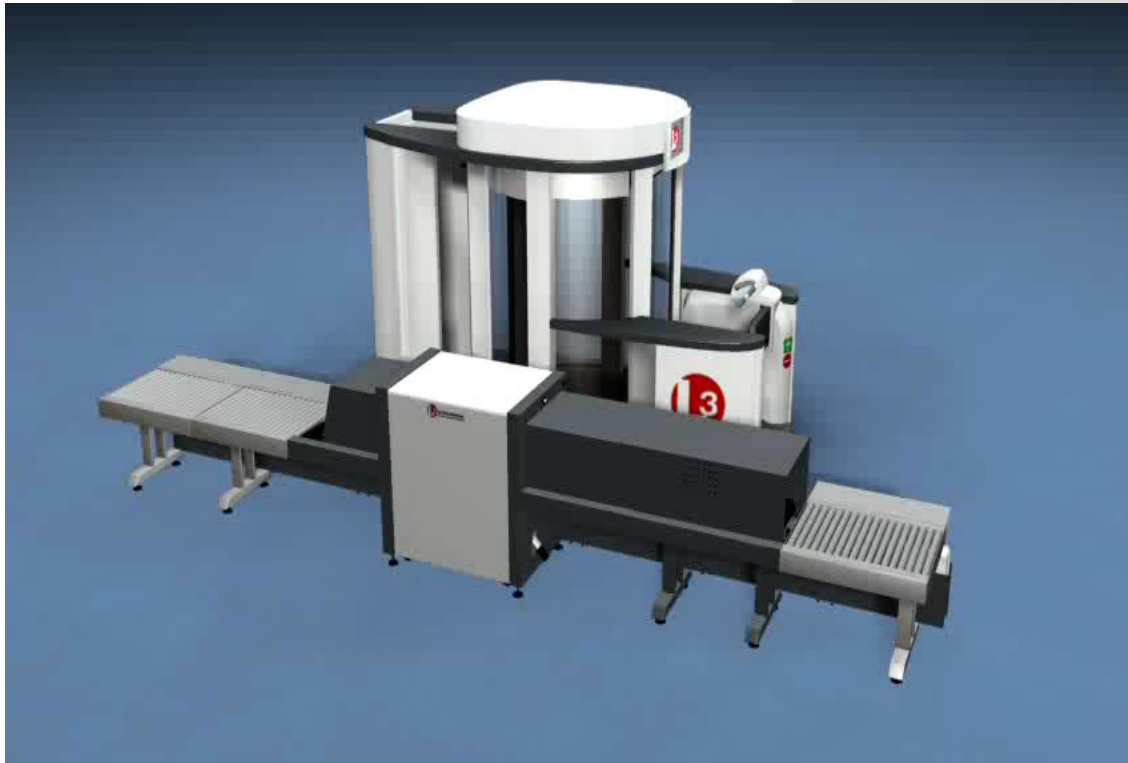


- IMS restdeeldetectie
- Detecteert en identificeert narcotica en explosieven
- Detecteert op nanogram niveau

IMS Detectie



Multi technologie



Rondvraag